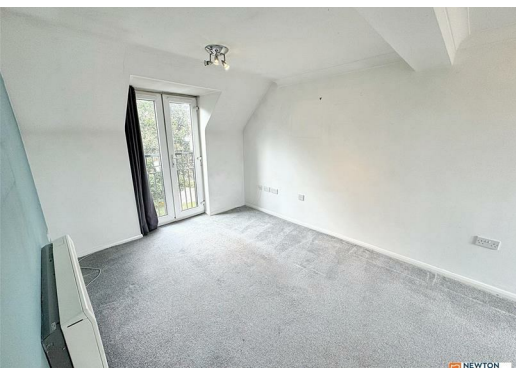




**Warren House Walk,**  
Sutton Coldfield, West Midlands, B76 1TS  
Guide Price £125,000





Being Sold via Secure Sale online bidding. Terms & Conditions apply. Starting Bid £125,000.

Newton Fallowell Sutton Coldfield are delighted to offer this two bedroom apartment for sale in a sought after location in Walmley, Sutton Coldfield. The property is situated on the second floor and briefly comprises of two double bedrooms, bathroom, kitchen and living room area.

The property is in a great position in Walmley, Sutton Coldfield, which is near to local transport links and amenities.

The property lease details are as follows;

- 101years remaining on the lease
- The monthly maintenance charge is £174.39
- The ground rent is £87.50 half yearly
- The property falls into Band C for Council Tax.

This apartment is not to be missed. Check out the virtual tour and book a viewing today!

Draft Details - PLEASE NOTE THESE ARE DRAFT DETAILS AWAITING THE VENDORS APPROVAL AND CANNOT BE RELIED ON TO BE WHOLLY ACCURATE.

Disclaimer - These particulars are issued in good faith but do not constitute representations of fact or form part of any offer or contract. The matters referred to in these particulars should be independently verified by prospective buyers or tenants. Newton Fallowell nor any of its employees or agents has any authority to make or give any representation or warranty whatever in relation to this property.

#### Auctioneers Additional Comments

Pattinson Auction are working in Partnership with the marketing agent on this online auction sale and are referred to below as 'The Auctioneer'.

This auction lot is being sold either under conditional (Modern) or unconditional (Traditional) auction terms and overseen by the auctioneer in partnership with the marketing agent.

The property is available to be viewed strictly by appointment only via the Marketing Agent or The Auctioneer. Bids can be made via the Marketing Agents or via The Auctioneers website.

Please be aware that any enquiry, bid or viewing of the subject property will require your details being shared between both any marketing agent and The Auctioneer in order that all matters can be dealt with effectively.

The property is being sold via a transparent online auction.

In order to submit a bid upon any property being marketed by The Auctioneer, all bidders/buyers will be required to adhere to a verification of identity process in accordance with Anti Money Laundering procedures. Bids can be submitted at any time and from anywhere.

Our verification process is in place to ensure that AML procedure are carried out in accordance with the law.

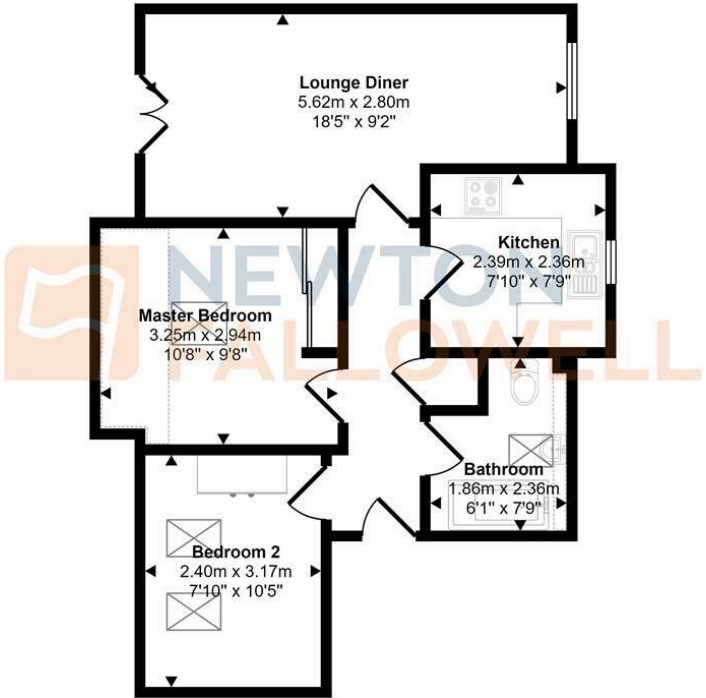
A Legal Pack associated with this particular property is available to view upon request and contains details relevant to the legal documentation enabling all interested parties to make an informed decision prior to bidding. The Legal Pack will also outline the buyers' obligations and sellers' commitments. It is strongly advised that you seek the

counsel of a solicitor prior to proceeding with any property and/or Land Title purchase.

#### Auctioneers Additional Comments

In order to secure the property and ensure commitment from the seller, upon exchange of contracts the successful bidder will be expected to pay a non-refundable deposit equivalent to 5% of the purchase price of the property. The deposit will be a contribution to the purchase price. A non refundable reservation fee of up to 6% inc VAT (subject to a minimum of 6,000 inc VAT) is also required to be paid upon agreement of sale. The Reservation Fee is in addition to the agreed purchase price and consideration should be made by the purchaser in relation to any Stamp Duty Land Tax liability associated with overall purchase costs. Both the Marketing Agent and The Auctioneer may believe necessary or beneficial to the customer to pass their details to third party service suppliers, from which a referral fee may be obtained. There is no requirement or indeed obligation to use these recommended suppliers or services.

Approx Gross Internal Area  
48 sq m / 521 sq ft



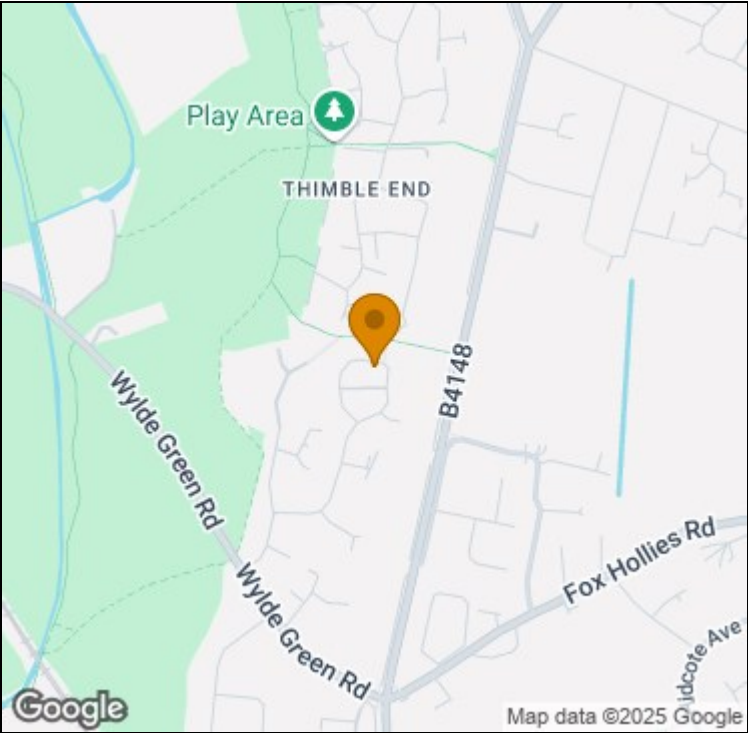
Floorplan

Denotes head height below 1.5m

This floorplan is only for illustrative purposes and is not to scale. Measurements of rooms, doors, windows, and any items are approximate and no responsibility is taken for any error, omission or mis-statement. Icons of items such as bathroom suites are representations only and may not look like the real items. Made with Made Snappy 360.

Energy Efficiency Rating		
	Current	Potential
Very energy efficient - lower running costs		
(92 plus) A		
(81-91) B		
(69-80) C		
(55-68) D		
(39-54) E		
(21-38) F		
(1-20) G		
Not energy efficient - higher running costs		
England & Wales		
EU Directive 2002/91/EC		

Environmental Impact (CO <sub>2</sub> ) Rating		
	Current	Potential
Very environmentally friendly - lower CO <sub>2</sub> emissions		
(92 plus) A		
(81-91) B		
(69-80) C		
(55-68) D		
(39-54) E		
(21-38) F		
(1-20) G		
Not environmentally friendly - higher CO <sub>2</sub> emissions		
England & Wales		
EU Directive 2002/91/EC		



t: 01212709744 e: erdington@goodchilds-uk.com  
[www.newtonfallowell.co.uk](http://www.newtonfallowell.co.uk)